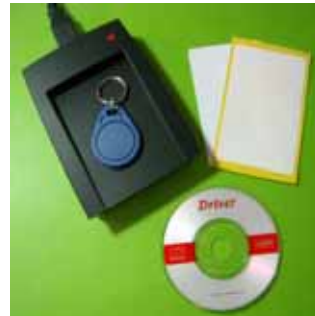


MF1-R-USB-KB-D1

13.56Mhz Mifare ISO14443A RFID Reader (Read ID only) with USB Keyboard emulation interface

FEATURES :

- Built-in bi-color LED and buzzer,
- Built-in transceiver antenna;
- power by USB interface and no external power is needed;
- support USB 1.1 or USB2.0 ;
- USB Keyboard emulation interface (read card ID as keyboard input) ;
- Reading distance : ISO card (~5-6cm) / Key fob (~2-3cm);
- Support 13.56Mhz Mifare ISO14443A RFID tags (e.g. S50 , S70 & ultra
- Read card unique serial No only
- Dip switch for data output format setting
- SIZE : (110x80x25) mm



DIP Switch Setting

SW 1	OFF	4 bytes	ON	3 bytes
SW 2,3,4	OFF	OFF	OFF	dec (10 digits)
	OFF	OFF	ON	dec (5 bytes, 13 digits)
	OFF	ON	OFF	hex (8 digits)
	OFF	ON	ON	hex (5 bytes, 10 digits)
	ON	OFF	OFF	dec (1+2 or 2+2 bytes)
	ON	OFF	ON	track 1 (10 digits) Add start string "%" & end string "?"
	ON	ON	OFF	track 2 (10 digits) Add start string ";" & end string "?"
	ON	ON	ON	track 3 (10 digits) Add start string "+" & end string "?"
SW 5	OFF	CR	ON	no suffix

Installation Guide

Connect the RFID reader to PC' USB port with the USB cable.

The PC will detect the RFID reader automatically and install it as a HID device .

After installation successfully, open "Notpad " or other application program to read the RFID Tag and the ID will be shown on the screen .

Change the Dip switch to select difference data output format for your requirement.

Example :

- 0016404729 → 4 byte data
- %0016404729? → magnetic card track 1 data format
- ;0016404729? → magnetic card track 2 data format
- +0016404729? → magnetic card track 3 data format